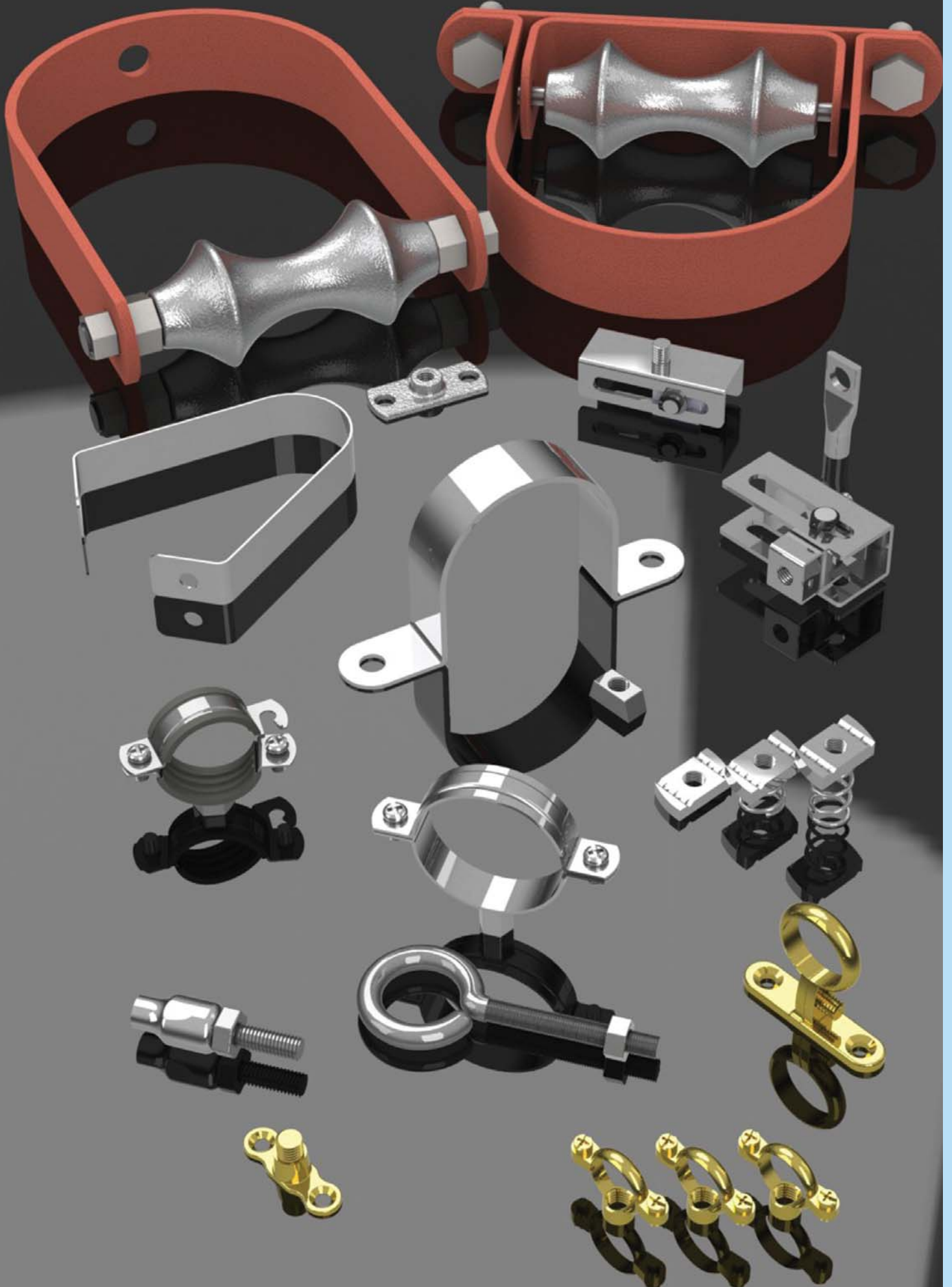


Pipe Support Systems





Off-site Pre Fabrication (Available on Request)

Surefix XL Unlined Clip

For Steel Pipes & Insulated Pipe Supports

Construction

Mild Steel
BZP Finish

For Use With

Steel & Cast Iron Tubes
Insulated Pipe Supports



Pipe Size	Grip Range (mm)	Boss Type	Screw (mm)	Material (mm)
1/2"	18-22	M8/M10	M5 x M18	1 x 20
22mm	22-26	M8/M10	M5 x M18	1 x 20
3/4"	26-30	M8/M10	M5 x M18	1 x 20
1"	31-36	M8/M10	M5 x M18	1 x 20
1 1/4"	38-43	M8/M10	M5 x M18	1 x 20
1 1/2"	45-52	M8/M10	M5 x M18	1.2 x 20
55mm	53-59	M8/M10	M5 x M18	1.2 x 20
2"	59-65	M8/M10	M5 x M18	1.2 x 20
70mm	65-72	M8/M10	M5 x M18	1.2 x 20
2 1/2"	74-89	M8/M10	M6 x M25	1.5 x 25
85mm	82-89	M8/M10	M6 x M25	1.5 x 25
3"	90-97	M8/M10	M6 x M25	1.5 x 25
95mm	93-100	M8/M10	M6 x M25	1.5 x 25
105mm	101-108	M8/M10	M6 x M25	1.5 x 25
4"	109-114	M8/M10	M6 x M25	1.5 x 25
120mm	115-125	M8/M10	M6 x M25	1.5 x 25
130mm	128-138	M8/M10	M6 x M25	2 x 25
5"	134-144	M8/M10	M6 x M25	2 x 25
145mm	141-151	M8/M10	M6 x M25	2 x 25
6"	157-167	M8/M10	M6 x M25	2 x 25
175mm	164-176	M8/M10	M6 x M25	2 x 25

Surefix XL Rubber Lined Clip

For Copper, Plastic and Stainless Steel Pipes



Construction

Mild Steel
BZP Finish

For Use With

Copper & Plastic Tubes

Special Features

Rubber Lining tested to
DIN4109 for Acoustic Use

Pipe Size	Grip Range (mm)	Boss Type	Screw (mm)	Material (mm)
15cu	12-16	M8/M10	M5 x M18	1 x 20
18mm	16-20	M8/M10	M5 x M18	1 x 20
22cu	20-24	M8/M10	M5 x M18	1 x 20
28cu	25-30	M8/M10	M5 x M18	1 x 20
35cu	32-37	M8/M10	M5 x M18	1 x 20
42cu	39-46	M8/M10	M5 x M18	1.2 x 20
1 1/2"	47-53	M8/M10	M5 x M18	1.2 x 20
54cu	53-59	M8/M10	M5 x M18	1.2 x 20
2"	59-66	M8/M10	M5 x M18	1.2 x 20
67cu	66-73	M8/M10	M6 x M25	1.5 x 25
76cu	74-81	M8/M10	M6 x M25	1.5 x 25
3"	82-89	M8/M10	M6 x M25	1.5 x 25
95mm	93-100	M8/M10	M6 x M25	1.5 x 25
108cu	101-108	M8/M10	M6 x M25	1.5 x 25
4"	107-113	M8/M10	M6 x M25	1.5 x 25
120cu	120-130	M8/M10	M6 x M25	2 x 25
133cu	126-136	M8/M10	M6 x M25	2 x 25
5"	133-143	M8/M10	M6 x M25	2 x 25
159cu	149-159	M8/M10	M6 x M25	2 x 25
6"	156-168	M8/M10	M6 x M25	2 x 25

Heavy Duty Surefix *HD* Unlined Clip

For Steel Pipes & Insulated Pipe Supports

Construction

Mild Steel
BZP Finish

For Use With

Steel & Cast Iron Tubes
Insulated Pipe Supports

Heavy Duty



Pipe Size	Grip Range (mm)	Boss Type	Screw (mm)	Material (mm)
50nb / 2"	60-68	M12	M8 x 25	25 x 2
67mm	66-73	M12	M8 x 25	25 x 2
65nb / 2 1/2"	74-81	M12	M8 x 25	25 x 2
85mm	82-88	M12	M8 x 25	25 x 2
80nb / 3"	88-97	M12	M8 x 25	25 x 2
100mm	93-100	M12	M8 x 25	25 x 2
105mm	101-109	M12	M8 x 25	30 x 2.5
100nb / 4"	110-118	M12	M8 x 25	30 x 2.5
120mm	116-126	M12	M10 x 40	30 x .3
135mm	130-141	M12	M10 x 40	30 x .3
125nb / 5"	136-145	M12	M10 x 40	30 x .3
145mm	144-154	M12	M10 x 40	30 x .3
150nb / 6"	160-169	M12	M10 x 40	30 x .3
175mm	170-180	M16	M10 x 40	30 x .3
200nb / 8"	219-230	M16	M10 x 40	30 x .3
250nb / 10"	273-283	M16	M10 x 40	30 x .3

Heavy Duty Surefix *HD* Rubber Lined Clip

For Copper, Plastic and Stainless Steel Pipes



Construction

Mild Steel
BZP Finish

For Use With

Copper & Plastic Tubes

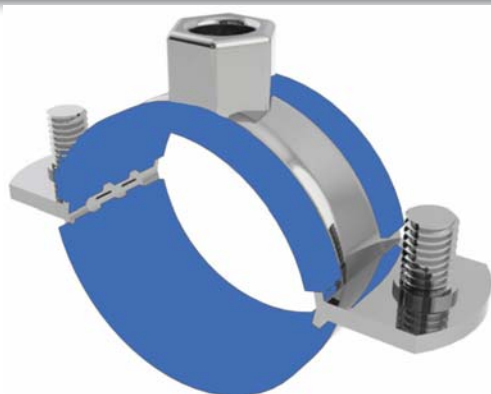
Special Features

Rubber Lining tested to
DIN4109 for Acoustic Use

Heavy Duty

Pipe Size	Grip Range (mm)	Boss Type	Screw (mm)	Material (mm)
67cu / 2"	60-69	M12	M8 x 25	25 x 2
76cu / 2 1/2"	75-81	M12	M8 x 25	25 x 2
80nb / 3"	83-91	M12	M8 x 25	25 x 2
108cu	102-112	M12	M8 x 25	30 x 2.5
125mm	122-138	M12	M10 x 40	30 x 3
155mm	153-164	M12	M10 x 40	30 x 3
200mm	196-209	M16	M10 x 40	30 x 3

Guide Clips



Construction

Mild Steel
BZP Finish

For Use With

Copper & Plastic Tubes

Special Features

Silicon Low Friction Lining

Size (mm)	Installed Length	Material Type	Temperature Limits °C	Part Number
32	130	Nylon Reinforced EPDM	-10 - 90	DST/032/PN16/6
40	130	Nylon Reinforced EPDM	-10 - 90	DST/040/PN16/6
50	130	Nylon Reinforced EPDM	-10 - 90	DST/050/PN16/6
65	130	Nylon Reinforced EPDM	-10 - 90	DST/065/PN16/6
80	130	Nylon Reinforced EPDM	-10 - 90	DST/080/PN16/6
100	130	Nylon Reinforced EPDM	-10 - 90	DST/100/PN16/6
125	130	Nylon Reinforced EPDM	-10 - 90	DST/125/PN16/6
150	130	Nylon Reinforced EPDM	-10 - 90	DST/150/PN16/6

Construction

Mild Steel
BZP Finish
HT Sets & Nuts

For Use With

Steel Tubes
Cast Iron Tubes
Insulated Pipe Supports

Other sizes available on request



Size ID (mm)	Size NB	Hole Centres (mm)	Bolt Size (mm)	Material Width & Thickness (mm)
65		115	M10 x 40	30 x 3
76	65NB / 2 1/2"	125	M10 x 40	30 x 3
83		130	M10 x 40	30 x 3
89	80NB / 3"	137	M12 x 40	30 x 3
95		143	M12 x 40	30 x 3
102		156	M12 x 40	30 x 3
108		163	M12 x 40	40 x 3
114	100 NB / 4"	175	M12 x 40	40 x 3
121		187	M12 x 40	40 x 3
127		190	M12 x 40	40 x 3
133		200	M12 x 40	40 x 3
140		205	M12 x 40	40 x 3
146		210	M12 x 40	40 x 3
152		218	M12 x 40	40 x 3
159		228	M12 x 40	40 x 3
168	150 NB / 6"	236	M12 x 40	40 x 3
173		240	M16 x 50	40 x 3
178		248	M16 x 50	40 x 3
186		258	M16 x 50	40 x 5
193		265	M16 x 50	40 x 5
199		276	M16 x 50	40 x 5
208		284	M16 x 50	40 x 5
216		290	M16 x 50	40 x 5
220	200 NB / 8"	300	M16 x 50	40 x 5
225		302	M16 x 50	40 x 5
232		310	M16 x 50	40 x 5
244		313	M16 x 50	40 x 5
252		318	M16 x 50	40 x 5
259		320	M16 x 50	40 x 5
268		336	M16 x 50	40 x 5
273	250 NB / 10"	360	M16 x 50	50 x 6
283		364	M16 x 50	50 x 6
290		374	M16 x 50	50 x 6
298		383	M16 x 50	50 x 6
308		405	M16 x 50	50 x 6
323	300 NB / 12"	420	M16 x 50	50 x 6

DST 130 - Split Band

Nylon Coated for Copper Pipes



Construction

Mild Steel
Nylon Coated Finish
HT Sets & Nuts

For Use With

Copper Tubes
Stainless Steel Tubes

Size ID (mm)	Size NB (cu)	Hole Centres (mm)	Bolt Size (mm)	Material Width & Thickness (mm)
15	15	50	M6 x 25	25 x 3
22	22	59	M6 x 25	25 x 3
28	28	65	M6 x 25	25 x 3
35	35	72	M6 x 25	25 x 3
42	42	92	M10 x 30	30 x 3
54	54	104	M10 x 30	30 x 3
67	67	116	M10 x 30	30 x 3
76	76	126	M10 x 30	30 x 3
108	108	158	M10 x 30	30 x 3
133	133	193	M12 x 40	40 x 3
159	159	219	M12 x 40	40 x 3

DST 190 - Forged Eye Bolt

Construction

Mild Steel
BZP Finish

Sizes Available

M8, M10, M12, M16, M20
Length - 100mm, 150mm,
200mm

For Use With

Split Band Clips



DST 200 - Link Eye

Construction

Cast Malleable Iron
BZP Finish

Sizes Available

M8, M10, M12

For Use With

Split Band Clips



DST 203 - Bow Nut

Construction

Mild Steel
BZP Finish

Sizes Available

M10, M12, M16, M20

For Use With

Split Band Clips



DST 105 - Bossed Split Band

For Steel Pipes & Insulated Pipe Supports



Construction

Mild Steel
BZP Finish
HT Sets & Nuts

For Use With

Steel Tubes
Cast Iron Tubes
Insulated Pipe Supports

Size ID (mm)	Size NB	Hole Centres (mm)	Boss	Bolt Size (mm)	Material Width & Thickness (mm)
65		115	M10	M10 x 40	30 x 3
76	65NB / 2 1/2"	125	M10	M10 x 40	30 x 3
83		130	M10	M10 x 40	30 x 3
89	80NB / 3"	137	M10	M12 x 40	30 x 3
95		143	M10	M12 x 40	30 x 3
102		156	M10	M12 x 40	30 x 3
108		163	M10	M12 x 40	40 x 3
114	100 NB / 4"	175	M10	M12 x 40	40 x 3
121		187	M12	M12 x 40	40 x 3
127		190	M12	M12 x 40	40 x 3
133		200	M12	M12 x 40	40 x 3
140		205	M12	M12 x 40	40 x 3
146		210	M12	M12 x 40	40 x 3
152		218	M12	M12 x 40	40 x 3
159		228	M12	M12 x 40	40 x 3
168	150 NB / 6"	236	M12	M12 x 40	40 x 3
173		240	M12	M16 x 50	40 x 3
178		248	M12	M16 x 50	40 x 3
186		258	M12	M16 x 50	40 x 5
193		265	M12	M16 x 50	40 x 5
199		276	M12	M16 x 50	40 x 5
208		284	M12	M16 x 50	40 x 5
216		290	M12	M16 x 50	40 x 5
220	200 NB / 8"	300	M12	M16 x 50	40 x 5
225		302	M12	M16 x 50	40 x 5
232		310	M12	M16 x 50	40 x 5
244		313	M12	M16 x 50	40 x 5
252		318	M12	M16 x 50	40 x 5
259		320	M12	M16 x 50	40 x 5
268		336	M12	M16 x 50	40 x 5
273	250 NB / 10"	360	M12	M16 x 50	50 x 6
283		364	M16	M16 x 50	50 x 6
290		374	M16	M16 x 50	50 x 6
298		383	M16	M16 x 50	50 x 6
308		405	M16	M16 x 50	50 x 6
323	300 NB / 12"	420	M16	M16 x 50	50 x 6

Construction

Mild Steel
BZP Finish

For Use With

Steel Tubes
Cast Iron Tubes
Insulated Pipe Supports



Size ID (mm)	Size NB	Hole Centres (mm)	Max Bolt Size (mm)	Material Width & Thickness (mm)
65		119	M12	30 x 3
76	65NB / 2 1/2"	144	M12	30 x 3
83		145	M12	30 x 3
89	80NB / 3"	163	M12	30 x 3
95		159	M12	30 x 3
102		166	M12	30 x 3
108		180	M12	40 x 3
114	100 NB / 4"	204	M12	40 x 3
121		192	M12	40 x 3
127		197	M12	40 x 3
133		204	M12	40 x 3
140		220	M12	40 x 3
146		212	M12	40 x 3
152		221	M12	40 x 3
159		228	M12	40 x 3
168	150 NB / 6"	238	M12	40 x 3
173		237	M12	40 x 3
178		247	M12	40 x 3
186		258	M12	40 x 3
193		262	M12	40 x 5
199		263	M12	40 x 5
208		268	M12	40 x 5
216		286	M12	40 x 5
220	200 NB / 8"	313	M12	40 x 5
225		297	M12	40 x 5
232		305	M12	40 x 5
244		313	M12	40 x 5

DST 132 Saddle Guide



Construction
Mild Steel
Nylon Coated Finish

For Use With
Copper Tubes
Stainless Steel Tubes

Size ID (mm)	Size NB (cu)	Hole Centres (mm)	Bolt Size (mm)	Material Width & Thickness (mm)
17	15	53	8	25 x 3
24	22	60	8	25 x 3
30	28	71	8	25 x 3
37	35	74	8	25 x 3
44	42	94	12	30 x 3
57	54	108	12	30 x 3
70	67	120	12	30 x 3
80	76	130	12	30 x 3
114	108	162	12	30 x 3
135	133	197	14	40 x 3
165	159	223	14	40 x 3

DST 133 Saddle Clamp



Construction
Mild Steel
Nylon Coated Finish

For Use With
Copper Tubes
Stainless Steel Tubes

Size ID (mm)	Size NB (cu)	Hole Centres (mm)	Bolt Size (mm)	Material Width & Thickness (mm)
15	15	53	8	25 x 3
22	22	60	8	25 x 3
28	28	71	8	25 x 3
35	35	74	8	25 x 3
42	42	94	12	30 x 3
54	54	108	12	30 x 3
67	67	120	12	30 x 3
76	76	130	12	30 x 3
108	108	162	12	30 x 3
133	133	197	14	40 x 3
159	159	223	14	40 x 3

Properties

CFC/HCFC-free with zero Ozone Depletion Potential (ODP)

High Closed Cell Content

Thermal Conductivity of 0.021 W/m·K / 0.146 Btu·in/hr·ft²·°F (The Lowest Thermal Conductivity of any Commonly Available Insulation Material)

Inert Bore Coated for use on all Pipes Including Copper



Kooltherm®

High-Density Rigid Phenolic Insulation 37-120 kg/m³ (5.0-7.5 lb/ft³)

General Physical Properties (Metric)

Property	Test Method	Unit	Typical Value			
Nominal Density	(EN ISO 845) / (ASTM D 1622)	Kg/m ³	37	60	80	120
Thermal Conductivity	(EN 12667) / (ASTM C 518)	W/m·K	0.021	0.029	0.03	0.032
Colour			Grey / Pink	Grey	Grey	Grey
Operating Temperature Limits	Upper Limit	°C	120	120	120	120
	Lower Limit	°C	-180	-180	-180	-180
Minimum Compressive Strength at +23 °C	(EN 826) / (ASTM D 1621) Parallel	kPa	150	320	590	1000
	Perpendicular	kPa	100	170	440	800
Minimum Tensile Strength +23 °C	(ASTM D 1623) Parallel	kPa	150	300	520	800
	Perpendicular	kPa	110	210	350	600
Linear Dimensional Stability	(EN 1604) / ASTM D 2126 +93°C for 24 Hours	%	≤1	≤1	≤1	≤1
	-30°C for 24 Hours	%	≤1	≤1	≤1	≤1
Linear Expansion Coefficient	(ASTM D 696)	m/m·K	40-70 x 10-6	40-70 x 10-6		40-70 x 10-6
Friability for 10 mins	(ASTM C 421)	%	<30	<40	<10	<10

Fire Test Classification

Fire Test	Test Method	Typical Value			
Horizontal Burning	ENISO 3582 : 2000	≤10 mm / 0.4 in	≤10 mm / 0.4 in	≤10 mm / 0.4 in	≤10 mm / 0.4 in
Oxygen Index	ENISO 4589-2 : 1996	≥50%	≥50%	≥50%	≥50%
Temperature Index EN ISO 4589-3 : 1996		>390 °C / 734 °C	>390 °C / 734 °C	>390 °C / 734 °C	>390 °C / 734 °C
Simple Index	NES 711	-	-	-	≤1.60
Toxicity Index	NES 713	-	-	-	≤2.70

Fire Test Specifications

Fire Test	Test Method	Specification			
Fire Propagation	BS 476-6: 1989	Index of Performance (I) not exceeding 12 and sub index (i1) not exceeding 6*			
Surface Spread of Flame	BS 476-7: 1997	Class 1*	Class 1*	Class 1*	Class 1*
Epiradiateur	NF P92-501	M1	M1	M1	M1
Vertical Burning	DIN 4102-1: 1998	B2	B2	B2	B2

These test results combined enable a Class 0 classification to the Building Regulations in England & Wales, Northern Ireland and the Republic of Ireland, and a Low Risk classification to the Building Standards in Scotland. These tests were conducted on samples of 25mm/1" thickness faced with a reinforced aluminium foil vapour barrier jacket.

Hard Wood Block Insulation



Material

Hardwood - Kiln Dried (Can be supplied FSC Approved)

Length

100mm (Tolerance of -1.5mm Maximum)

Thickness

15, 20, 25, 30, 40, 50, 63, 75 (Other Thicknesses available upon request)

Tolerance on thickness not exceeding +/-1.5mm

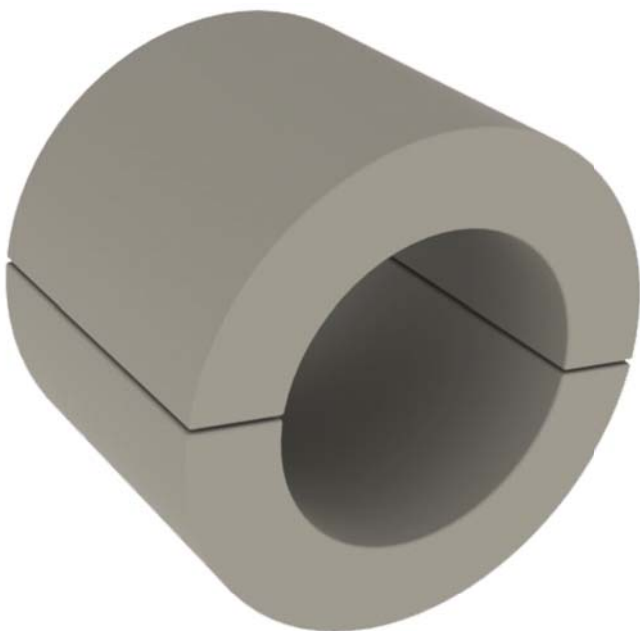
Bore Sizes

Steel - 15nb, 20nb, 25nb, 32nb, 40nb, 50nb, 65nb, 80nb, 100nb, 125nb, 150nb, 200nb, 250nb, 300nb

Copper - 15cu, 22cu, 28cu, 35cu, 42cu, 54cu, 67cu, 76cu, 108cu, 133cu, 159cu.

Plastic - Available upon request.

Calcium Silicate Insulation



Description

A tough and durable calcium silicate insulation offering exceptional thermal efficiency on hot process

applications. Non combustible, it is an inert material, containing no asbestos.

Appearance

White/off white rigid insulation.

Product Application

Calcium Silicate is an ideal insulation material for high temperature pipes. Used throughout the Petrochemical, Power Generation, Furnace and primary aluminium sectors, Calcium Silicate combines excellent thermal efficiency with high compressive strength, able to withstand foot traffic.

Typical Product Performance

	Insulite 650	Insulite 1050
Maximum Service Temp:	650°C	1050°C
Age Density:	220kg/m ³	265kg/m ³
Compressive Strength:	0.8 Mpa	1.8Mpa
Combustibility:	Non-comb	Non-comb
Linear Shrinkage:	<2%	1.4%
Flexural Strength:	0.4 Mpa	0.8 Mpa
Thermal Conductivity @ 200°C	0.06W/mK	0.07W/mK

DST 104 S/E 'U' Bolt

For Steel Pipes & Insulated Pipe Supports

Construction

Mild Steel
BZP Finish

For Use With

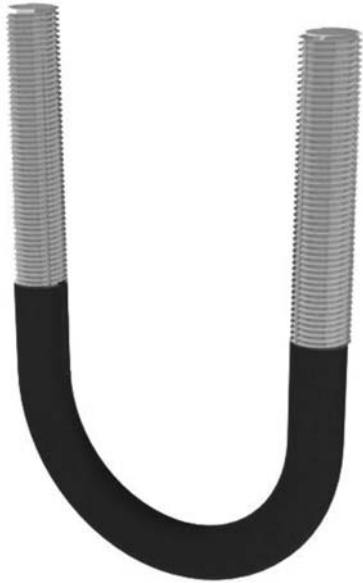
Steel Tubes
Cast Iron Tubes
Insulated Pipe Supports



Size ID (mm)	Size NB	Rod Ø
21	15NB / 1/2"	M6
27	20NB / 3/4"	M6
34	25 NB / 1"	M6
42	32NB / 1 1/4"	M10
48	40NB / 1 1/2"	M10
60	50NB / 2"	M10
65		M12
76	65NB / 2 1/2"	M12
83		M12
89	80NB / 3"	M12
95		M12
102		M12
108		M12
114	100NB / 4"	M12
121		M12
127		M12
133		M12
140		M12
146		M12
152		M12
159		M12
168	150NB / 6"	M12
173		M12
178		M12
186		M12
193		M12
199		M12
208		M12
216		M12
220	200NB / 8"	M16
225		M16
232		M16
244		M16

DST 134 S/E 'U' Bolt

For Copper Pipes



Construction

Mild Steel
Nylon Coated Finish

For Use With

Copper Tubes
Stainless Steel Tubes

Size ID (mm)	Size NB (cu)	Rod Ø	Leg Centres	Thread Length Standard	Thread Length Extended
15	15	M6	22	30	75
22	22	M6	29	30	75
28	28	M6	35	30	75
35	35	M6	42	30	85
42	42	M8	52	40	85
54	54	M8	64	40	85
67	67	M8	76	40	85
76	76	M10	88	40	85
108	108	M10	120	40	85
133	133	M10	145	40	85
159	159	M12	173	40	85

LF Range - Low Friction Guides

- Construction**
Mild Steel BZP Finish
Low Friction Slide Insert
- For Use With**
Unlined & Rubber Lined Clips
Bossed Split Bands on Larger Sizes
- Special Features**
Dual & Triple Bosses
Lockable for transport



Type	Internal Thread	External Thread	Max Travel	SWL
LF1	M8/M10	N/A	65mm	0.5kN
LF2-1	M10	M16	90mm	2.0kN
LF2-2	M10	M16	120mm	2.0kN
LF3-1	M10/M12	1/2"	120mm	6.0kN
LF3-2	M10/M12	1/2"	135mm	6.0kN

- Construction**
Mild Steel
BZP Finish
- For Use With**
Unlined & Rubber Lined
Brackets to Create a Guided
System

DST MS1 & 2 Modular Slide Guide Assembly



MS1 Slimline

MS2 Standard

Type	Internal Thread	Max Travel	SWL
MS1	M10	50mm	0.25kN
MS2	M8/M10	50mm	0.25kN

- Construction**
Mild Steel
BZP Finish
- For Use With**
Unlined & Lined Clip Range &
Hanging brackets to reduce
drop rod lateral loads

DST BH - Ball Hanger



Size	Movement	SWL
M8	+/-5°	0.15kN
M10	+/-5°	0.20kN
M12	+/-5°	0.25kN

DST AAB - Adjustable Anchor Bracket

For Steel, Copper & Stainless Steel Pipes

The DST AAB Adjustable Anchor Bracket banks either 2 or 3 Split split bands on a set of steel cleat which can be adjusted for height and fall.

As a standard upto 54mm od bands will be powder coated, with larger sizes BZP for steel pipes or powder coated for copper & stainless steel.

Other band combinations are available upon request including brass, stainless steel & thicker profile steel bands.

Construction

Mild Steel BZP Finish
High Tensile BZP Set Screws

For Use With

Copper, Steel & Stainless Steel pipes

Special Features

Adjustable Height & Angle to facilitate fall in pipework.

Pipe Size	Band Material	Band QTY	Finish	SWL (kN)	Part Code	Torque Settings
15	25 x 3	2	Black Powder Coat	2.0	AAB(2)015	40nm
22	25 x 3	2	Black Powder Coat	2.0	AAB(2)022	40nm
28	25 x 3	2	Black Powder Coat	2.0	AAB(2)028	40nm
35	25 x 3	2	Black Powder Coat	2.0	AAB(2)035	40nm
42	30 x 3	2	Black Powder Coat	2.0	AAB(2)042	60nm
54	30 x 3	2	Black Powder Coat	2.0	AAB(2)054	60nm
15	25 x 3	2	Black Powder Coat	2.0	AAB(2)022	40nm
20	25 x 3	2	Black Powder Coat	2.0	AAB(2)028	40nm
25	25 x 3	2	Black Powder Coat	2.0	AAB(2)035	40nm
32	25 x 3	2	Black Powder Coat	2.0	AAB(2)042	60nm
40	30 x 3	2	Black Powder Coat	2.0	AAB(2)040	60nm
50	30 x 3	2	BZP	2.0	AAB(2)050	60nm
15	25 x 3	3	Black Powder Coat	3.0	AAB(3)015	40nm
22	25 x 3	3	Black Powder Coat	3.0	AAB(3)022	40nm
28	25 x 3	3	Black Powder Coat	3.0	AAB(3)028	40nm
35	25 x 3	3	Black Powder Coat	3.0	AAB(3)035	40nm
42	30 x 3	3	Black Powder Coat	6.5	AAB(3)042	60nm
54	30 x 3	3	Black Powder Coat	6.5	AAB(3)054	60nm
67	30 x 3	3	Black Powder Coat	6.5	AAB(3)067	60nm
76	30 x 3	3	Black Powder Coat	6.5	AAB(3)076	60nm
108	40 x 3	3	Black Powder Coat	8.0	AAB(3)108	60nm
133	40 x 3	3	Black Powder Coat	8.0	AAB(3)133	60nm
159	40 x 3	3	Black Powder Coat	8.0	AAB(3)159	60nm
15	25 x 3	3	Black Powder Coat	3.0	AAB(3)022	40nm
20	25 x 3	3	Black Powder Coat	3.0	AAB(3)028	40nm
25	25 x 3	3	Black Powder Coat	3.0	AAB(3)035	40nm
32	25 x 3	3	Black Powder Coat	3.0	AAB(3)042	60nm
40	30 x 3	3	Black Powder Coat	6.5	AAB(3)040	60nm
50	30 x 3	3	BZP	6.5	AAB(3)050	60nm
65	30 x 3	3	BZP	6.5	AAB(3)065	60nm
80	30 x 3	3	BZP	6.5	AAB(3)080	60nm
100	40 x 3	3	BZP	8.0	AAB(3)100	60nm
125	40 x 3	3	BZP	8.0	AAB(3)125	60nm
150	40 x 3	3	BZP	8.0	AAB(3)150	60nm



Slip & Band Anchors

For Steel, Copper & Stainless Steel Pipes

Construction

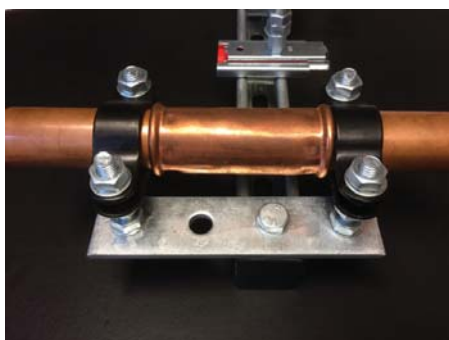
Mild Steel BZP or Powder Finish
High Tensile BZP Set Screws

For Use With

Copper, Steel & Stainless Steel
pipes

Special Features

Fabricated on Site using DST100
or DST130 Split Bands



The Slip Anchor and Band Anchor are an effective way of installing anchors on site with relatively low costs.

The idea is to use multiple split bands to ensure a firm mechanical grip on the pipework. In the case of the Slip Anchor, a band is placed on either side of a slip coupling to add a failsafe mechanism. The coupling could be any type of slip coupling, but not a pipe connector unless its a welded flange.

Pipe Size	Band Material	No Of Bands	Finish	Anchor Type
15	25 x 3	2	Black Powder Coat	Slip
22	25 x 3	2	Black Powder Coat	Slip
28	25 x 3	2	Black Powder Coat	Slip
35	25 x 3	2	Black Powder Coat	Slip
42	30 x 3	2	Black Powder Coat	Slip
54	30 x 3	2	Black Powder Coat	Slip
67	30 x 3	2	Black Powder Coat	Slip
76	30 x 3	2	Black Powder Coat	Slip
108	40 x 3	2	Black Powder Coat	Slip

15	25 x 3	2	Black Powder Coat	Slip
20	25 x 3	2	Black Powder Coat	Slip
25	25 x 3	2	Black Powder Coat	Slip
32	25 x 3	2	Black Powder Coat	Slip
40	30 x 3	2	Black Powder Coat	Slip
50	30 x 3	2	BZP	Slip
65	30 x 3	2	BZP	Slip
80	30 x 3	2	BZP	Slip
100	40 x 3	2	BZP	Slip

Pipe Size	Band Material	No Of Bands	Finish	Anchor Type
15	25 x 3	2	Black Powder Coat	Band
22	25 x 3	2	Black Powder Coat	Band
28	25 x 3	2	Black Powder Coat	Band
35	25 x 3	2	Black Powder Coat	Band
42	30 x 3	2	Black Powder Coat	Band
54	30 x 3	3	Black Powder Coat	Band
67	30 x 3	3	Black Powder Coat	Band
76	30 x 3	3	Black Powder Coat	Band
108	40 x 3	3	Black Powder Coat	Band

15	25 x 3	2	Black Powder Coat	Band
20	25 x 3	2	Black Powder Coat	Band
25	25 x 3	2	Black Powder Coat	Band
32	25 x 3	2	Black Powder Coat	Band
40	30 x 3	2	Black Powder Coat	Band
50	30 x 3	3	BZP	Band
65	30 x 3	3	BZP	Band
80	30 x 3	3	BZP	Band
100	40 x 3	3	BZP	Band

DST 114 Roller & Chair Guide Assembly



Construction

Mild Steel
BZP Finish
HT Sets & Nuts

For Use With

Steel Tubes
Cast Iron Tubes
Insulated Pipe Supports

Nominal Imperial	Pipe Size Metric (NB)	C/L of Pipe	Lug Centres	Material A (mm)	Material B (mm)	Bolt Size
1/2"	15	41	95	30 x 3	30 x 5	M10 x 30
3/4"	20	44	95	30 x 3	30 x 5	M10 x 30
1"	25	47	95	30 x 3	30 x 5	M10 x 30
1 1/4"	32	55	105	30 x 3	30 x 5	M10 x 30
1 1/2"	40	58	105	30 x 3	30 x 5	M10 x 30
2"	50	72	116	30 x 3	30 x 5	M10 x 30
2 1/2"	65	80	140	30 x 3	30 x 5	M10 x 30
3"	80	87	180	40 x 3	40 x 5	M12 x 40
4"	100	99	180	40 x 3	40 x 5	M12 x 40
5"	125	130	230	50 x 3	50 x 6	M16 x 50
6"	150	144	230	50 x 3	50 x 6	M16 x 50
8"	200	200	380	50 x 6	50 x 8	M16 x 50
10"	250	250	430	50 x 6	50 x 10	M20 x 70
12"	300	289	490	50 x 6	50 x 10	M20 x 70

Construction

Mild Steel
BZP Finish
HT Sets & Nuts

For Use With

Steel Tubes
Cast Iron Tubes
Insulated Pipe Supports



Nominal Imperial	Pipe Size Metric (NB)	C/L of Pipe	Width	Hole Centres	Material (mm)	Fixing Holes
1/2"	15	49	60	12 x 25 Slot	30 x 5	12
3/4"	20	52	60	12 x 25 Slot	30 x 5	12
1"	25	55	60	12 x 25 Slot	30 x 5	12
1 1/4"	32	59	60	12 x 25 Slot	30 x 5	12
1 1/2"	40	62	60	12 x 25 Slot	30 x 5	12
2"	50	68	60	12 x 25 Slot	30 x 5	12
2 1/2"	65	76	80	12 x 25 Slot	30 x 5	12
3"	80	111	112	50	40 x 5	12
4"	100	123	112	50	40 x 5	12
5"	125	150	170	70	50 x 6	14
6"	150	164	170	70	50 x 6	14
8"	200	200	256	115	50 x 8	19
10"	250	245	312	127	50 x 10	19
12"	300	300	362	152	50 x 10	19

DST 115 Hanging Roller



Construction

Mild Steel
BZP Finish
HT Sets & Nuts

For Use With

Steel Tubes
Cast Iron Tubes
Insulated Pipe Supports

Nominal Imperial	Pipe Size Metric (NB)	Height	Width (mm)	Hole Ø	Material (mm)
1/2"	15	80	50	12	30 x 3
3/4"	20	80	50	12	30 x 3
1"	25	80	50	12	30 x 3
1 1/4"	32	97	65	12	30 x 3
1 1/2"	40	97	65	12	30 x 3
2"	50	118	70	12	30 x 3
2 1/2"	65	136	92	12	30 x 3
3"	80	190	130	14	40 x 3
4"	100	190	130	14	40 x 3
5"	125	250	180	19	50 x 6
6"	150	250	180	19	50 x 6
8"	200	300	240	23	60 x 8
10"	250	355	292	23	60 x 8
12"	300	410	342	23	60 x 8

Construction

Cold Rolled Mild Steel
Pre-Galv Finish

For Use With
Steel Tubes



Nominal Imperial	OD (mm)	Height	Width (mm)	Hole Ø	Material (mm)
1/2"	28	51.5	36.5	10.5	25 x 1
3/4"	30	53.5	37.5	10.5	25 x 1
1"	36	65.5	46.5	10.5	25 x 1
1 1/4"	46	79.9	55.7	10.5	25 x 1.2
1 1/2"	52	85.9	58.7	10.5	25 x 1.2
2"	66	99.9	65.7	10.5	25 x 1.2
2 1/2"	78	116	75.5	10.5	25 x 1.2
3"	92	132	84.5	10.5	25 x 1.2
4"	116	167.5	107.5	10.5	25 x 2
5"	142	200	126.5	13	25 x 2.5
6"	170	238	150.5	13	25 x 2.5
8"	222	311.5	197.5	17	30 x 3
10"	275	384.5	244	17	30 x 3
12"	324	470	310	17	30 x 3

Munsen Rings

DST 240 G/M/B - Munsen Rings

Construction

Metric Threads



240G = Galvanised

240M = Malleable
Iron

240B = Cast Brass

DST 241 G/M/B - School Board Clips



241G = Galvanised

241M = Malleable
Iron

241B = Cast Brass

DST 242 G/M/B - Backplates



242G = Galvanised

242M = Malleable
Iron

242B M10 Male & Female Threads

High Tensile Nut

Construction

Steel Grade 8.8 DIN934.
Cold Formed.
BZP Finish

Sizes Available

M4, M5, M6, M8, M10,
M12, M16, M20, M24



Wedge Nut

Construction

Mild Steel
BZP Finish

Sizes Available

M6, M8, M10 & M12



Flange Clamp

Construction

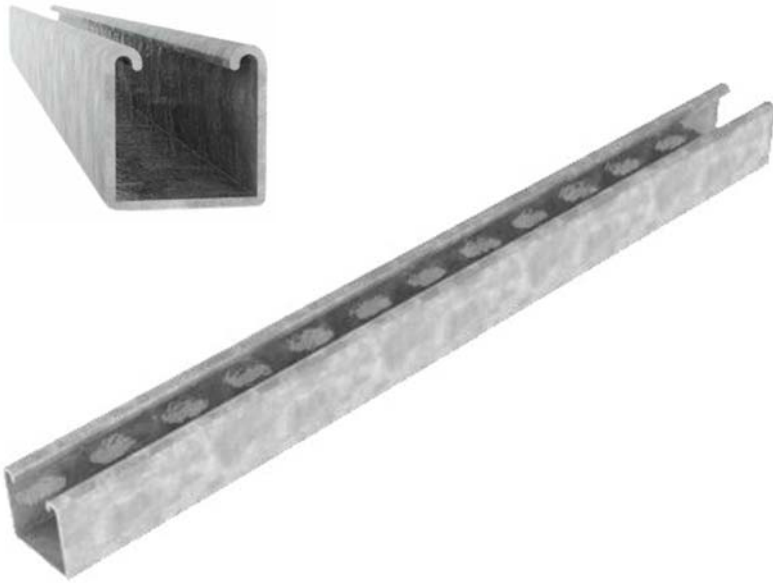
Mild Steel
BZP Finish

Sizes Available

M8, M10 & M12



DST Strut System



Construction

Cold Rolled Mild Steel

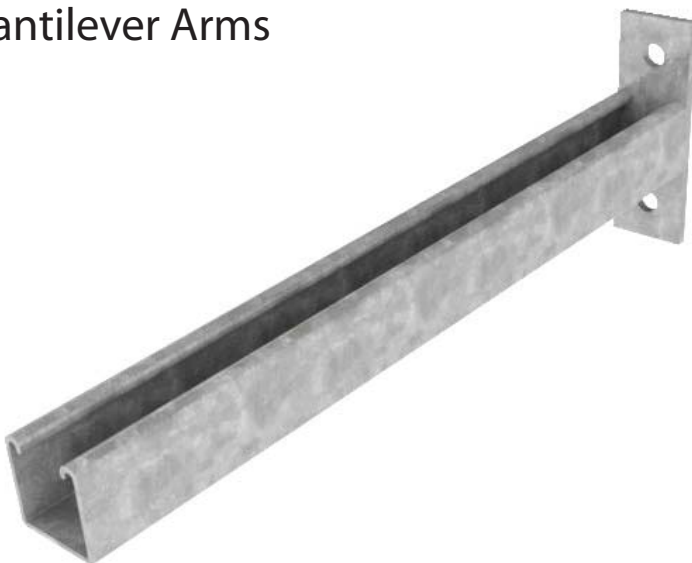
Pre-Galv Finish

Manufactured to BS 6946

We also Offer a Cutting Service

Length (m)	Description	Weight (Kg)
3	41 x 41 Deep Plain	7.83
6	41 x 41 Deep Plain	15.66
3	41 x 41 Deep Slotted	7.47
6	41 x 41 Deep Slotted	14.94
3	41 x 21 Shallow Plain	5.52
6	41 x 21 Shallow Plain	11.04
3	41 x 21 Shallow Slotted	5.16
6	41 x 41 Shallow Slotted	10.32
3	41 x 41 Deep Back to Back	15.66
6	41 x 41 Deep Back to Back	31.32
3	41 x 21 Shallow Back to Back	11.01
6	41 x 21 Shallow Back to Back	22.02

Cantilever Arms



Construction

Cold Rolled Mild Steel
Pre-Galv Finish
Manufactured to BS 6946

Lengths

150mm, 300mm, 450mm,
600mm, 750mm

Square Plate Washers

Construction

5mm Mild Steel BZP Finish

Sizes Available

M6, M8, M10, M12



Channel Nuts

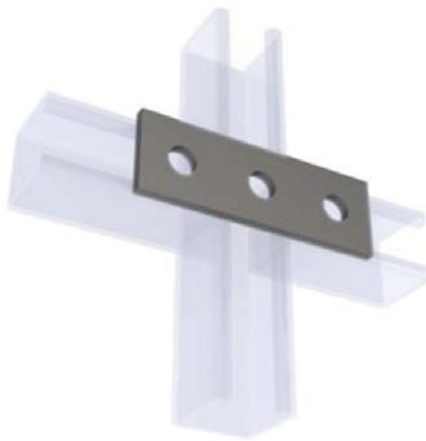


Size	Type	Thickness (mm)	Spring Length (mm)
M6	No Spring	5	n/a
M8	No Spring	5	n/a
M10	No Spring	8	n/a
M12	No Spring	8	n/a
M6	Short Spring	5	10
M8	Short Spring	5	10
M10	Short Spring	8	10
M12	Short Spring	8	10
M6	Long Spring	8	35
M8	Long Spring	5	35
M10	Long Spring	8	35
M12	Long Spring	8	35

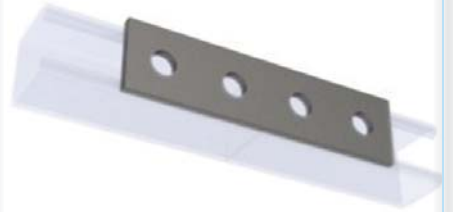
DST Strut Brackets



DST02



DST03



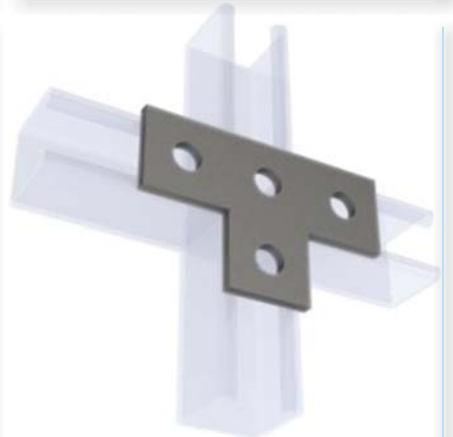
DST04



DST05



DST06



DST07

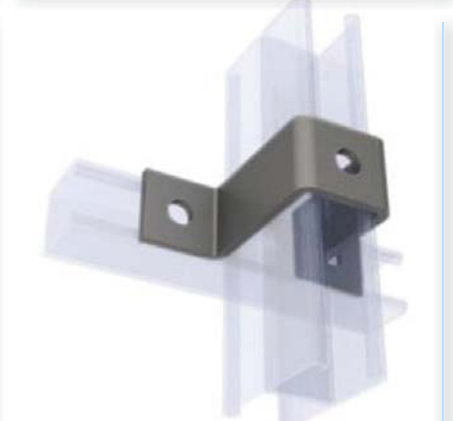


DST08



DST09
41 x 21

DST10
41 x 41



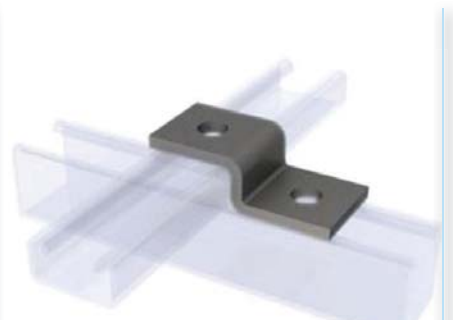
DST11



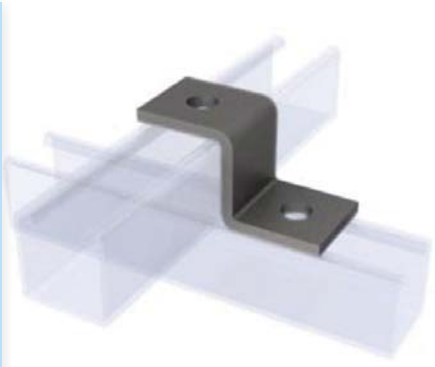
DST12



DST13



DST14



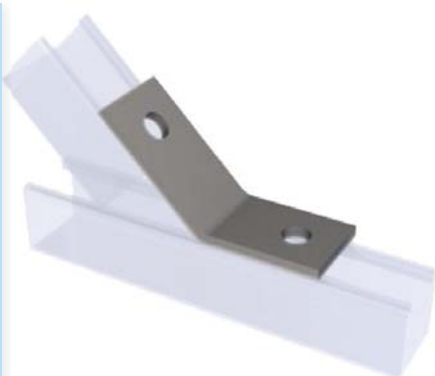
DST15



DST16



DST17



DST18



DST19



DST20



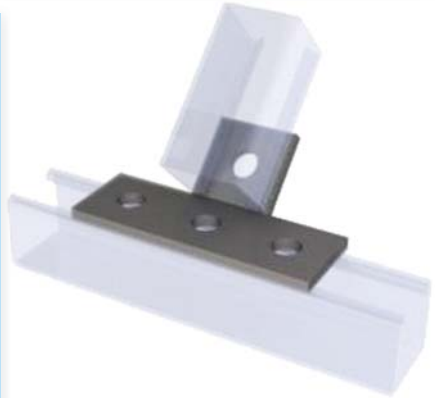
DST21



DST23



DST25



DST26



DST27



DST28

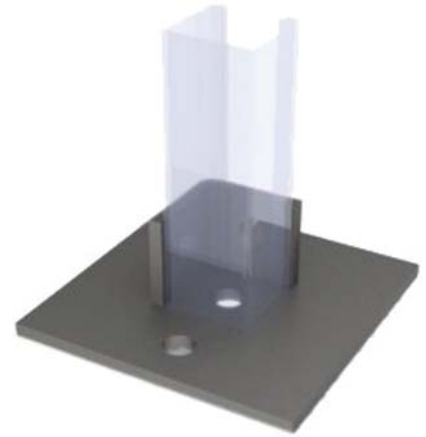
DST Strut Brackets



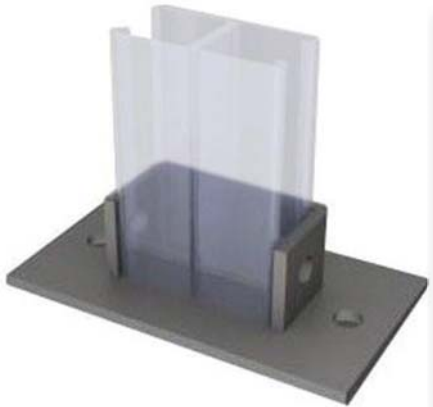
DST29



DST30



DST31



DST32



DST33



DST35



DST37



DST38



DST39



DST40



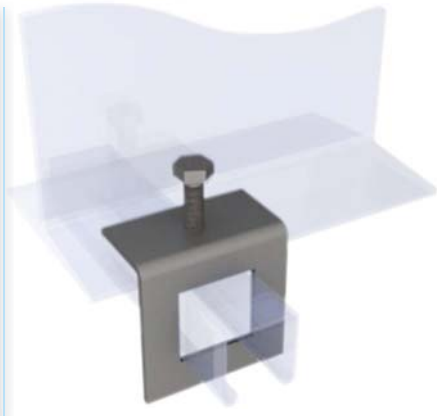
DST41



DST42



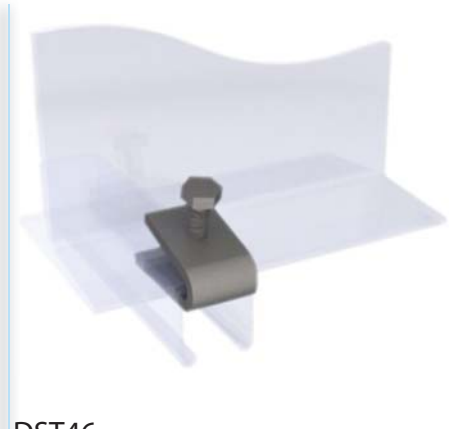
DST43



DST44



DST45



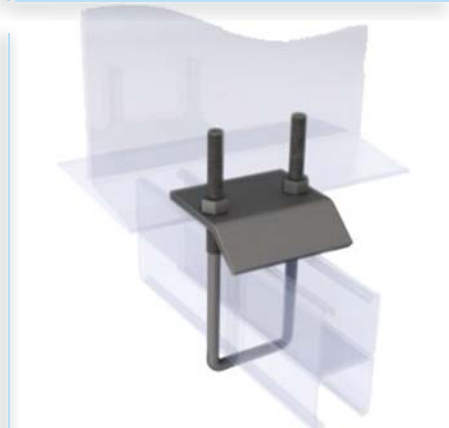
DST46



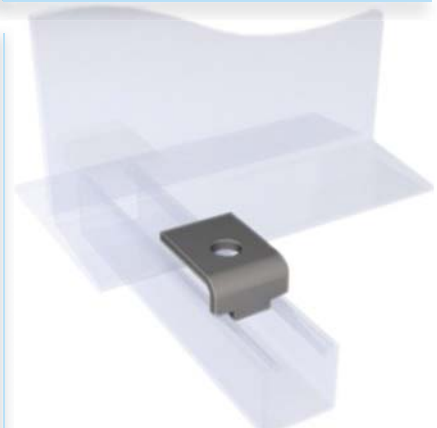
DST47



DST48



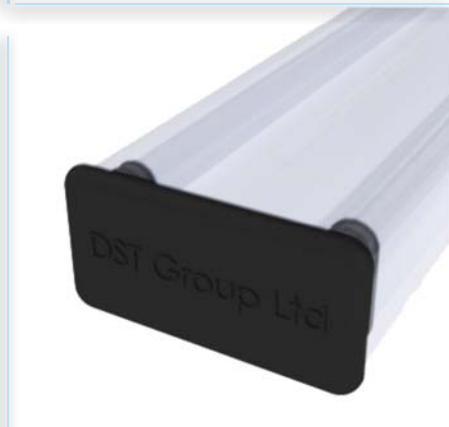
DST49



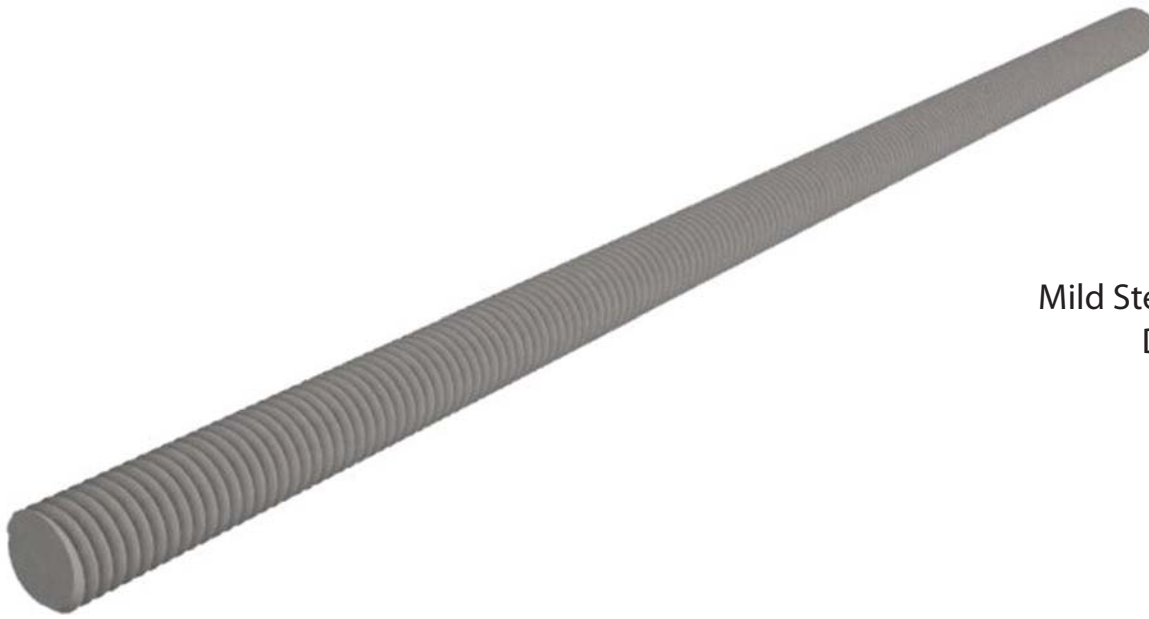
DST50



DST51



DST52



Construction

Mild Steel 4.8 Grade to
DIN EN20891.-1

BZP Finish

Standard Lengths	Cut Lengths (mm)			
Size	Size	Size	Size	Size
M6 x 1m	M10 x 25	M10 x 160	M10 x 295	M10 x 430
M6 x 3m	M10 x 30	M10 x 165	M10 x 300	M10 x 435
M8 x 3m	M10 x 35	M10 x 170	M10 x 305	M10 x 440
M10 x 1m	M10 x 40	M10 x 175	M10 x 310	M10 x 445
M10 x 3m	M10 x 45	M10 x 180	M10 x 315	M10 x 450
M12 x 1m	M10 x 50	M10 x 185	M10 x 320	M10 x 455
M16 x 1m	M10 x 55	M10 x 190	M10 x 325	M10 x 460
M16 x 3m	M10 x 60	M10 x 195	M10 x 330	M10 x 465
M20 x 1m	M10 x 65	M10 x 200	M10 x 335	M10 x 470
M20 x 3m	M10 x 70	M10 x 205	M10 x 340	M10 x 475
M24 x 1m	M10 x 75	M10 x 210	M10 x 345	M10 x 480
M24 x 3m	M10 x 80	M10 x 215	M10 x 350	M10 x 485
	M10 x 85	M10 x 220	M10 x 355	M10 x 490
	M10 x 90	M10 x 225	M10 x 360	M10 x 495
	M10 x 95	M10 x 230	M10 x 365	M10 x 500
	M10 x 100	M10 x 235	M10 x 370	M10 x 505
	M10 x 105	M10 x 240	M10 x 375	M10 x 510
	M10 x 110	M10 x 245	M10 x 380	M10 x 515
	M10 x 115	M10 x 250	M10 x 385	M10 x 520
	M10 x 120	M10 x 255	M10 x 390	M10 x 525
	M10 x 125	M10 x 260	M10 x 395	M10 x 530
	M10 x 130	M10 x 265	M10 x 400	M10 x 535
	M10 x 135	M10 x 270	M10 x 405	M10 x 540
	M10 x 140	M10 x 275	M10 x 410	M10 x 545
	M10 x 145	M10 x 280	M10 x 415	M10 x 550
	M10 x 150	M10 x 285	M10 x 420	M10 x 555
	M10 x 155	M10 x 290	M10 x 425	M10 x 560

Offsite Assembly Service



Reduced on-site labour costs

Reduced store sizes

Reduced hot works

INCREASED PRODUCTIVITY



DST offers:

- Pre-assembled supports to your requirements.
- Co-ordinated take off and design if required.
- Fabrication of all supports, secondary and structural steelwork.
- Fully palletised and delivered when you need to install.
- Studding and strut pre-cut to reduce hot works.

Offsite Pre-Fabrication Service



DST Group can Design and Manufacture a wide range of fabricated steel products.



Examples of our Products Include:

- Stepovers
- Anchors
- Roof Support Brackets
- Slide Guides
- Stantions
- Steelwork Brackets
- ... and many more ...



Features:

- Product's Designed using the latest 3D CAD Systems
- Work carried out by Experienced Fabricators
- New Purpose Built Fabrication Facility
- Items Available in a Wide Range of Finishes